

## **DETRIMENTAL INGREDIENT DETECTION SYSTEM**

**A .VASAVI SUJATHA, GOURU SIRI, YALLAMATI SPOORTHY , KOTHA SREEYA**

1 Assistant Professor, Department of Information Technology, Bhoj Reddy Engineering College for Women

2.3.4 B,tch students, Department of *Information Technology, Bhoj Reddy Engineering College for Women*

[sirigouru888@gmail.com](mailto:sirigouru888@gmail.com)

### **ABSTRACT**

*The Detrimental Ingredient Detection System (DIDS) is an innovative software solution designed to help users identify harmful ingredients present in food items and cosmetic products. In today's market, product labels often contain complex chemical names that are difficult for consumers to understand, leading to unintentional exposure to potentially dangerous substances. This system addresses the problem by providing a simple, efficient, and intelligent method for analyzing ingredient lists. Users can input data through multiple methods, including uploading images of product labels, scanning barcodes, or manually entering ingredient details. The system utilizes Optical Character Recognition (OCR) technology, supported by LSTM-based models, to accurately extract text from images. The extracted ingredients are then analyzed using machine learning techniques such as the Multinomial Naive Bayes algorithm, which classifies each ingredient as safe, harmful, or requiring caution based on a predefined and continuously updated database. The system highlights harmful or allergenic substances, provides detailed information about their potential health effects, and suggests safer alternatives to guide users toward better choices. Additionally, it generates comprehensive reports that can be saved or shared for future reference. With its user-friendly interface, high accuracy, and real-time processing capabilities, the Detrimental Ingredient Detection System aims to bridge the gap between product information and consumer awareness. Ultimately, it empowers users to make informed decisions, promotes healthier lifestyles, and contributes to increased transparency and safety in the food and cosmetic industries.*

### **KEYWORDS**

Detrimental Ingredients, OCR, LSTM, Naive Bayes, Food Safety, Cosmetic Safety, Machine Learning

### **OBJECTIVE**

The primary objective of the Detrimental Ingredient Detection System is to develop an intelligent and reliable solution that identifies harmful, toxic, or unsafe ingredients present in food products, cosmetics, and medicines. The system aims to analyze ingredient lists using advanced technologies such as Artificial Intelligence and Machine Learning to detect substances that may cause health risks, allergies, or long-term side effects.

Additionally, the system seeks to provide users with real-time insights and safety alerts, helping them make informed decisions about the products they consume or use. It also aims to enhance public awareness about hazardous ingredients, promote healthier choices, and support regulatory compliance by maintaining a database of restricted and harmful substances.

### **NEED FOR STUDY**

In today's world, consumers are increasingly exposed to a wide range of food products, cosmetics, and pharmaceuticals that often contain complex chemical ingredients. Many of these ingredients are difficult for the average person to understand, and some may be harmful, toxic, or cause allergic reactions. This creates a strong need for a system that can simplify ingredient analysis and ensure consumer safety.

The study is necessary because there is a growing lack of awareness among people regarding the presence and effects of detrimental ingredients. Individuals often rely on labels that use scientific or unfamiliar terminology, making it challenging to identify

potential risks. As a result, harmful substances may be unknowingly consumed or used, leading to health issues over time.

Furthermore, with the rapid increase in lifestyle-related diseases, allergies, and skin sensitivities, there is a demand for smarter solutions that can provide personalized safety recommendations. Traditional methods of checking ingredients manually are time-consuming and prone to human error, which highlights the need for an automated and intelligent system.

This study also supports the advancement of Artificial Intelligence in healthcare and consumer safety by applying machine learning techniques to detect harmful ingredients efficiently. It aims to bridge the gap between complex scientific data and user-friendly information, enabling people to make informed and healthier choices.

### EXISTING SYSTEM

In the current scenario, several applications and platforms are available to help users analyze product ingredients, especially in food and cosmetic items. Popular systems mainly rely on barcode scanning or manual search features to provide information about product safety. Users scan a product's barcode or enter its name to receive details about ingredients, nutritional values, and possible health effects. These systems aim to create awareness and help users make informed decisions.

However, most existing systems have certain limitations in their functionality. Barcode-based applications can only provide information for products that are already stored in their database, making them ineffective for newly launched, local, or homemade products. Additionally, manual ingredient searches require users to have prior knowledge of chemical names, which can be complex and confusing. This makes the

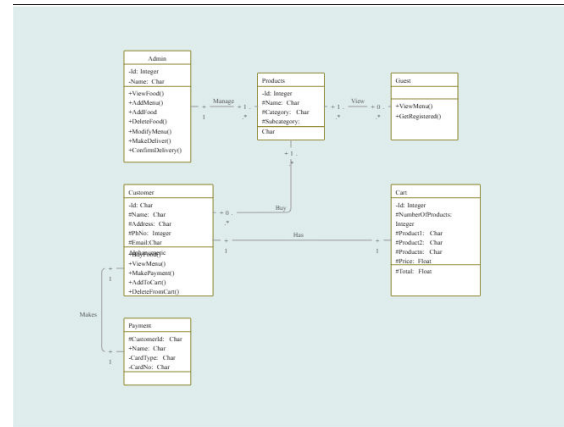
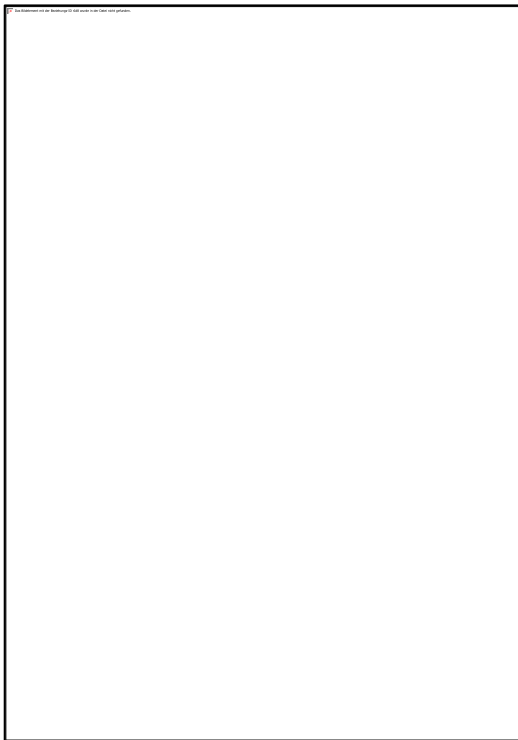
process time-consuming and less user-friendly, especially for individuals without a scientific background.

Moreover, many existing platforms have limited ingredient databases and may not always provide comprehensive or up-to-date information. Some systems fail to accurately classify ingredients based on their safety levels or do not offer personalized recommendations. As a result, users may not get complete or reliable insights into the potential risks associated with certain ingredients. These drawbacks highlight the need for a more advanced, accurate, and user-friendly solution like the proposed system.

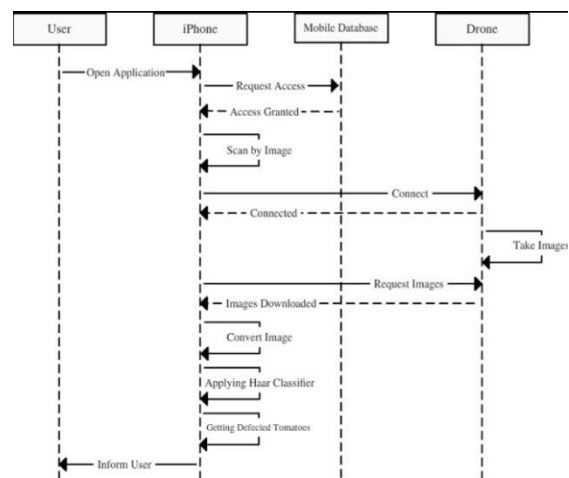
### DISADVANTAGES

- **Limited Functionality:** Only supports basic web apps and may lose context during long conversations.
- **User Experience Issues:** Struggles with vague instructions and has limited undo capabilities.
- **Setup Barriers:** Requires manual configuration and an OpenAI API key, which may be a challenge for some users.
- **Code and Performance Gaps:** Occasionally generates buggy code and handles long chat histories inefficiently.
- **Security Concerns:** Lacks robust input validation and secure API key management

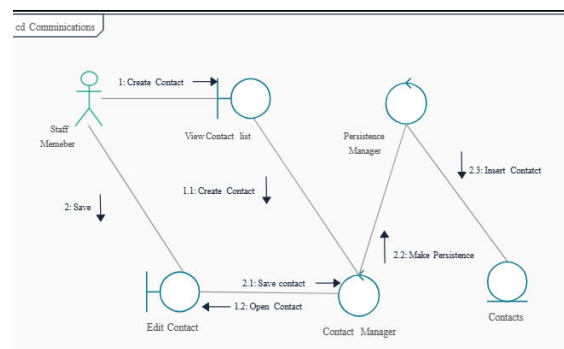
### SYSTEM ARCHITECTURE



### SEQUENCE DIAGRAM

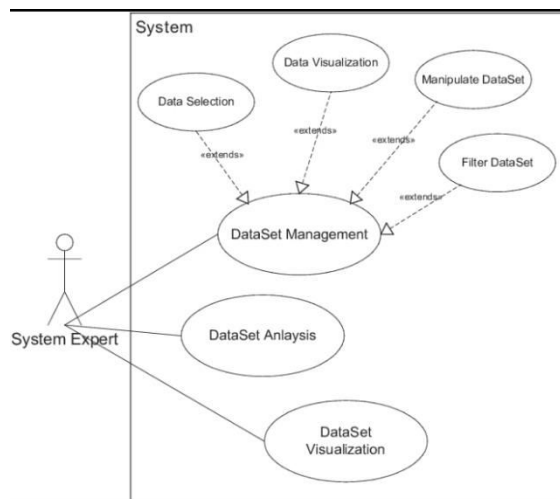


### COLLABORATION DIAGRAM



### UML DIAGRAM

### USE CASE DIAGRAM



### CLASS DIAGRAM

### SYSTEM REQUIREMENTS

#### 1. Hardware Requirements

- **Processor:** Minimum Intel i5 or equivalent (Recommended: Intel i7 / AMD Ryzen 7 for faster model training)
- **RAM:** Minimum 8 GB (Recommended: 16 GB or higher for handling large datasets)
- **Storage:** At least 256 GB SSD (Recommended: 512 GB or higher for faster data access)
- **GPU (Optional):** NVIDIA GPU (for deep learning models and faster computation)
  - **Network:** Stable internet connection for real-time transaction data processing

## 2. Software Requirements

- **Operating System:** Windows, Linux, or macOS
- **Programming Language:** Python (preferred for machine learning development)
- **Libraries & Frameworks:**
  - NumPy, Pandas (data processing)
  - Scikit-learn (machine learning algorithms)
  - TensorFlow / PyTorch (deep learning models)
  - Matplotlib / Seaborn (data visualization)
  - SHAP (model explainability)
- **Database:** MySQL / PostgreSQL / MongoDB for storing transaction data
- **Development Tools:** Jupyter Notebook / VS Code / PyCharm

## MODULE DESCRIPTION

The system consists of multiple modules that work together to detect harmful ingredients and provide useful insights to users. The User Management Module is responsible for handling user registration, login, and profile management, ensuring secure access and allowing personalization based on user preferences such as allergies. The Data Input Module enables users to either scan product

labels or manually enter ingredient details, ensuring accurate data collection for further processing.

The Ingredient Processing Module cleans and standardizes the input data by removing inconsistencies and converting ingredient names into a uniform format. The Detection and Analysis Module acts as the core component, where Artificial Intelligence and Machine Learning techniques are used to analyze ingredients and identify harmful or toxic substances based on predefined rules and trained models.

The Ingredient Database Module stores detailed information about various ingredients, including their safety levels, side effects, and regulatory status, and is regularly updated by the admin. The Report Generation Module creates a clear and user-friendly report that highlights harmful ingredients, safety scores, and warnings. The Recommendation Module suggests safer alternatives or products to help users make better decisions.

Finally, the Admin Module manages the overall system by updating the database, adding new ingredients, and ensuring the system functions accurately and efficiently. Together, these modules provide a comprehensive solution for detecting and understanding detrimental ingredients.

## CHALLENGES & RISKS

AspirePath AI, while offering intelligent career guidance, faces several challenges and risks during its development and deployment. One of the primary challenges is ensuring the accuracy and reliability of AI recommendations, as incorrect or biased data can lead to misleading career suggestions. Data privacy and security is another critical concern, since the system handles sensitive user information such as personal details, education, and career preferences. Maintaining up-to-date industry data is also challenging, as job market trends and required skills change

rapidly, which may affect the relevance of recommendations.

Additionally, integrating complex machine learning models requires high computational resources and technical expertise, which can increase development costs and system complexity. User adoption can also be a challenge, as individuals may hesitate to trust AI-based career guidance over traditional methods. There is also a risk of algorithmic bias, where the system may unintentionally favor certain career paths or user groups.

From a technical perspective, ensuring system scalability and performance under a large number of users is crucial. Any system failure or downtime can negatively impact user experience. Furthermore, dependency on external data sources such as job portals and course providers may introduce reliability issues.

Overall, addressing these challenges and risks is essential to ensure that AspirePath AI delivers accurate, secure, and trustworthy career guidance to its users.

## PROPOSED SYSTEM

The proposed system is an intelligent, AI-powered solution designed to automatically detect harmful and unsafe ingredients present in food products, cosmetics, and pharmaceutical items. The system allows users to scan product labels or manually enter ingredient details, which are then analyzed using advanced Machine Learning algorithms and a well-maintained ingredient database.

The system works by first capturing the input through image scanning or text entry, followed by preprocessing to standardize ingredient names. It then compares the ingredients with a comprehensive database containing information about toxic, allergenic, and restricted substances. The AI/ML model further evaluates the risk level of each ingredient and classifies them based on their safety.

After analysis, the system generates a detailed and user-friendly report that includes identified harmful ingredients, safety scores, potential health risks, and warnings. Additionally, the system provides personalized recommendations by suggesting safer alternatives based on user preferences and health conditions.

The proposed system also includes an admin interface that enables continuous updating of the ingredient database, ensuring accuracy and relevance. By combining automation, real-time analysis, and intelligent recommendations, the system aims to enhance consumer awareness, promote healthier choices, and reduce the risk associated with harmful ingredients.

## ADVANTAGES

The Detrimental Ingredient Detection System offers several important benefits that enhance user safety and decision-making. One of the key advantages is **improved health awareness**, as the system helps users easily identify harmful or toxic ingredients that are otherwise difficult to understand due to complex scientific names.

Another major advantage is **time-saving and automation**, since the system quickly analyzes ingredients using AI/ML techniques, eliminating the need for manual checking and research. This makes the process faster, more efficient, and user-friendly.

The system also provides **accurate and reliable detection** by using a structured database and intelligent algorithms, reducing the chances of human error. It offers **real-time analysis and instant alerts**, allowing users to make immediate decisions while purchasing or using products.

Additionally, it supports **personalized recommendations**, suggesting safer alternatives based on user preferences, allergies, or health conditions. This enhances

the overall user experience and promotes healthier lifestyle choices.

The system ensures **continuous improvement** through regular updates in the ingredient database, keeping it aligned with the latest research and regulations. It also contributes to **consumer safety and awareness**, helping users avoid long-term health risks.

Finally, the system is **scalable and adaptable**, meaning it can be expanded to various industries such as food safety, cosmetics, and pharmaceuticals, making it a versatile and impactful solution.

## Conclusion

The Detrimental Ingredient Detection System has been successfully designed and implemented to analyze and identify harmful ingredients from both text and image inputs. The system effectively combines technologies such as Optical Character Recognition (OCR), machine learning algorithms, and web development frameworks to deliver accurate and reliable results. All major functionalities, including ingredient classification, voice output for harmful ingredients, and PDF report generation, have been developed and tested successfully, making the system complete and functional.

The performance of the system has been evaluated through various test cases, and the results indicate a high level of accuracy and efficiency. The system is capable of processing user inputs quickly and providing clear outputs with minimal delay. Features such as input validation, real-time analysis, and user-friendly interface improve the overall usability of the application. The integration between frontend, backend, and machine learning modules ensures smooth data flow and reliable system behavior in different scenarios.

Despite its effectiveness, the system has some limitations, particularly in handling low-quality or blurry images, which can affect OCR accuracy. Additionally, the system may not recognize newly introduced or unknown ingredients if they are not present in the dataset. These limitations can be addressed in future work by improving the OCR model, expanding the ingredient database, and incorporating advanced AI techniques. Overall, the Detrimental Ingredient Detection System is a robust and practical solution that contributes to user awareness and promotes safer consumption of products.

## FUTURE ENHANCEMENT

The Detrimental Ingredient Detection System can be further enhanced in several ways to improve its accuracy, usability, and real-world applicability. One major improvement is the enhancement of the OCR module to handle low-quality or blurry images more effectively. By integrating advanced image processing techniques and deep learning-based OCR models, the system can achieve better text extraction accuracy from complex product labels.

Another important future enhancement is the expansion of the ingredient database. Currently, the system relies on a predefined dataset, which may not include all possible ingredients. By continuously updating the database and integrating external APIs or cloud-based food safety databases, the system can provide more comprehensive and up-to-date results. Additionally, incorporating more advanced machine learning or deep learning models can improve prediction accuracy and handle complex ingredient patterns.

The system can also be extended by adding new features such as a mobile application for wider accessibility, barcode scanning for instant product analysis, and multilingual support to assist users from different regions. Furthermore, personalized recommendations based on user health conditions (such as allergies or dietary restrictions) can be implemented. These enhancements will make

the system more intelligent, user-friendly, and suitable for large-scale real-world deployment.

## REFERENCE

- [1] The paper titled "Development of a Toxic Food Ingredients Detector" was presented at the 2021 IEEE 12th Annual Information Technology, Electronics Conference (IEMCON) in October 2021 [https://www.researchgate.net/publication/356820257\\_Development\\_of\\_a\\_Toxic\\_Food\\_Ingredients\\_Detector](https://www.researchgate.net/publication/356820257_Development_of_a_Toxic_Food_Ingredients_Detector)
- [2] Detection and Prevention of Foreign Material in Food <https://pmc.ncbi.nlm.nih.gov/articles/>
- [3] Artificial colorants, benzoate preservatives, and non-caloric sweeteners may increase risks of mental health disorders. <https://pubmed.ncbi.nlm.nih.gov/38423749/>
- [4] Online Analysis of Ingredient Safety, Leveraging OCR and Machine Learning for Enhanced Consumer Product Safety 2024 <https://ieeexplore.ieee.org/document/10531558>